

# Evergreen Trail School

---

Making Washington a Better Place to Ride

**Preston, WA & Tiger Mt.**

**Sat, April 9, 2015**

- **8-11:45am:** Classroom
- **11:45-12:45pm:** Lunch
- **12:45-4pm:** Trail Work



# Classroom Agenda

---

- Introduction
- Planning
- Design
- **Construction**
- **Maintenance**
- Wrap-Up





---

**Sustainable Trails. Rider Powered.**  
**[www.evergreenMTB.org](http://www.evergreenMTB.org)**

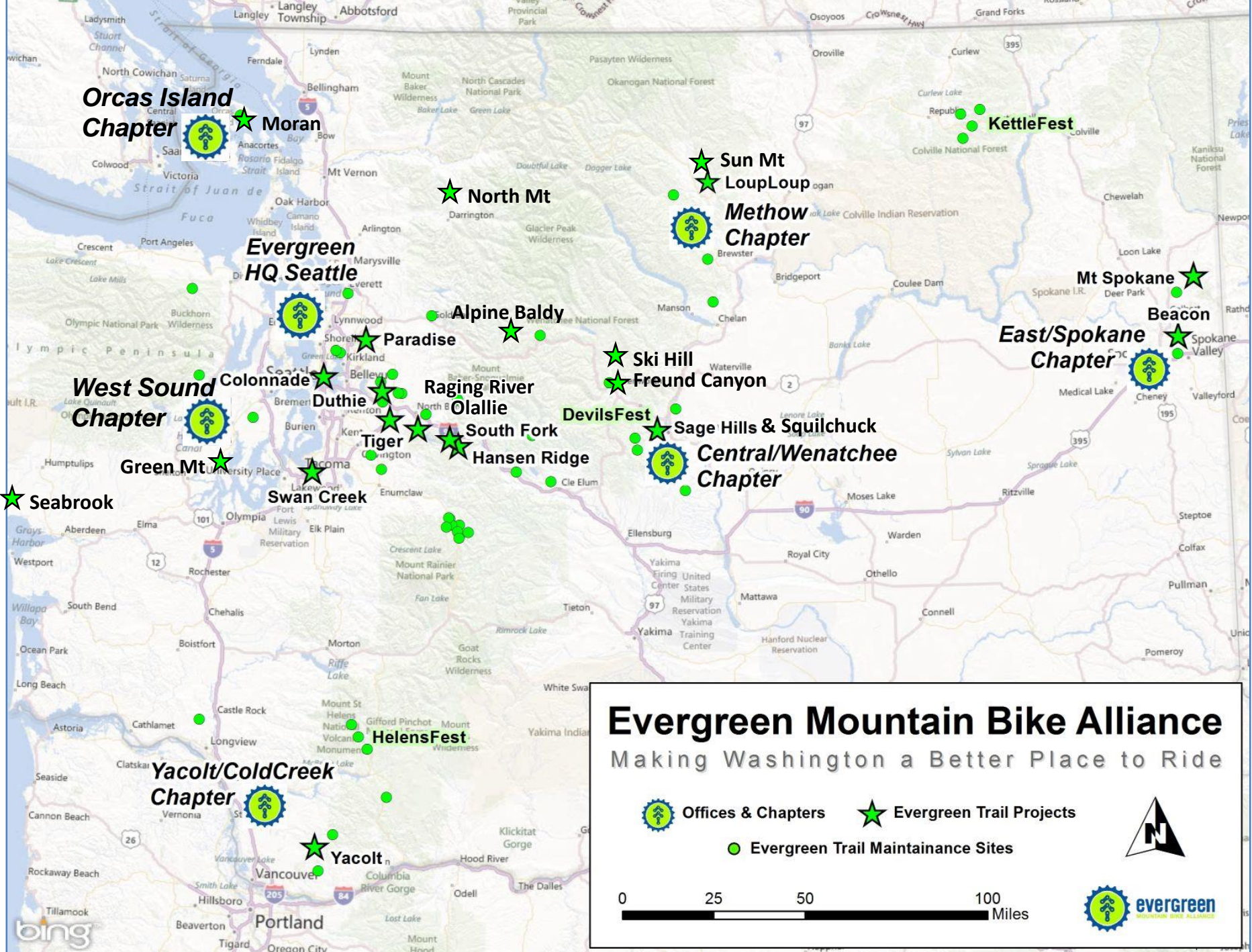
**501 (c) 3 non-profit with 8,000+ followers**

**Mission: Evergreen creates and protects sustainable  
mountain biking opportunities in Washington.**

**Advocacy, Trail Building & Maintenance, Education & Recreation**

**5 Regional Chapters:**

- Central/Wenatchee
  - Methow
- East/Spokane
  - Cold Creek
  - West Sound
  - Orcas Island



**Orcas Island Chapter**

**Moran**

**KettleFest**

**Sun Mt  
LoupLoup**

**Methow Chapter**

**Evergreen HQ Seattle**

**North Mt**

**Alpine Baldy**

**Mt Spokane**

**East/Spokane Chapter**

**Beacon**

**West Sound Chapter**

**Colonnade**

**Paradise**

**Raging River**

**Ski Hill**

**Freund Canyon**

**Green Mt**

**Swan Creek**

**Duthie**

**Olallie**

**DevilsFest**

**Sage Hills & Squilchuck  
Central/Wenatchee Chapter**

**Seabrook**

**Tiger**

**South Fork**

**Hansen Ridge**

**HelensFest**

**Yacolt/ColdCreek Chapter**

**Yacolt**

# Evergreen Mountain Bike Alliance

Making Washington a Better Place to Ride



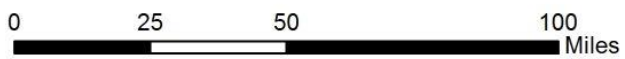
Offices & Chapters



Evergreen Trail Projects



Evergreen Trail Maintenance Sites



2004

### Colonnade

- ground breaking Oct 2005
- P1 opening Sept 2007
- P2 opening Sept 2008

2006

### Paradise Valley Re-Opened

#### Duthie

- First brushing WP Sept 2008
- P1 opening May 2010
- P2 opening June 2012

2008

### South Fork Snoqualmie

- P1 Hansen Ridge opened Oct 2009
- P2 started summer 2011

2010

### Tiger Mt

- 1<sup>st</sup> new MTB trail in 20 years started July 2011
- ETS Trail opened Sept 2012
- Silent Swamp and OTG started

2012

### Swan Creek

- Contract signed Jan 2013
- 1<sup>st</sup> trail to open summer 2013

2013

### Leavenworth Ski Hill

### Squilchuck State Park

### Cold Creek/ Yacoult Burn

### Mount Spokane

### Methow: Sun Mountain

### Olallie State Park

### Tiger Mt & Raging River State Forests

2014

2015



**BBTC**  
BACKCOUNTRY bicycle TRAILS Club

**Snohomish County**



SEATTLE PARKS AND RECREATION



**evergreen**  
MOUNTAIN BIKE ALLIANCE

King County Parks **Your Big Backyard**



WASHINGTON STATE DEPARTMENT OF **Natural Resources**



**Chapters**

# Stewardship

---



**Preserve**



**Protect**



**Manage**

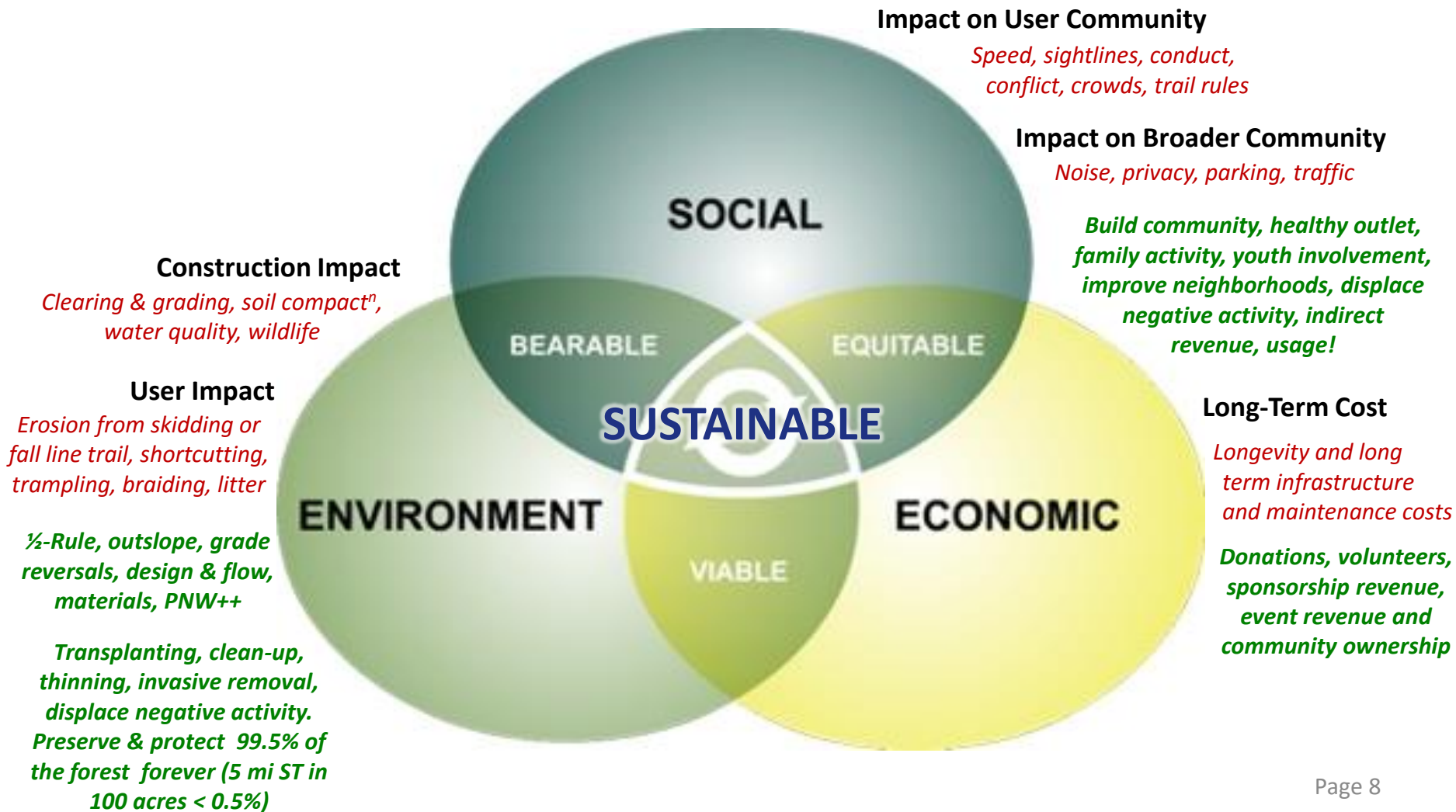


# Sustainability

---



# Trail Sustainability





# Video#1: Intro to Trail Work with Evergreen

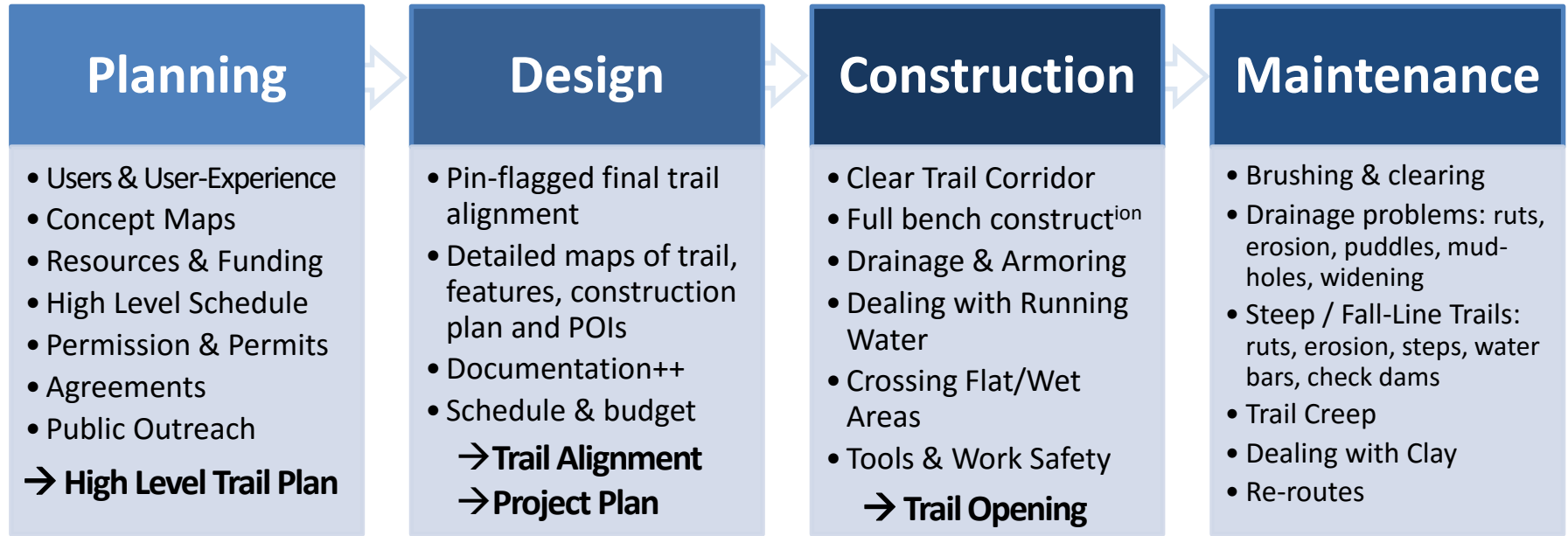
---



- <http://www.youtube.com/watch?v=nk2nRCugKfg&list=UUvUdqLwNzfs7z26phteTMw&index=1> *Video by Chris Wojcik*



# Building & Maintaining Sustainable Trails



**Bike-Friendly Techniques**



**PNW Techniques**



**Tools, Special Considerations**

# Planning

## Planning

- Objectives & Deliverables
- User-Experience
- Concept Maps
- Resources & Funding
- High Level Schedule
- Permission & Permits
- Agreements
- Public Outreach

## Design

- Scouting, control points, flagging
- Trail Alignment
- Detailed Maps
- Grades, Half-rule, Specs, Flow, Features, Sightlines, Drainage
- Documentation++
- Schedule & budget

## Construction

- Trail Corridor, Outslope, Full Bench, ½-Bench, Switchbacks, Grade Reversals
- Dealing with Running Water
- Crossing Flat/Wet Areas
- Tools & Work Safety

## Maintenance

- Brushing & clearing
- Drainage problems: ruts, erosion, puddles, mud-holes, widening
- Steep / Fall-Line Trails: ruts, erosion, steps, water bars, check dams
- Trail Creep
- Dealing with Clay
- Re-routes



**Bike-Friendly Techniques**



**PNW Techniques**



**Tools, Special Considerations**

# User Experience

Target Styles, Users & Skill Levels

*Flowy, Technical, AM, DH, FR ?*

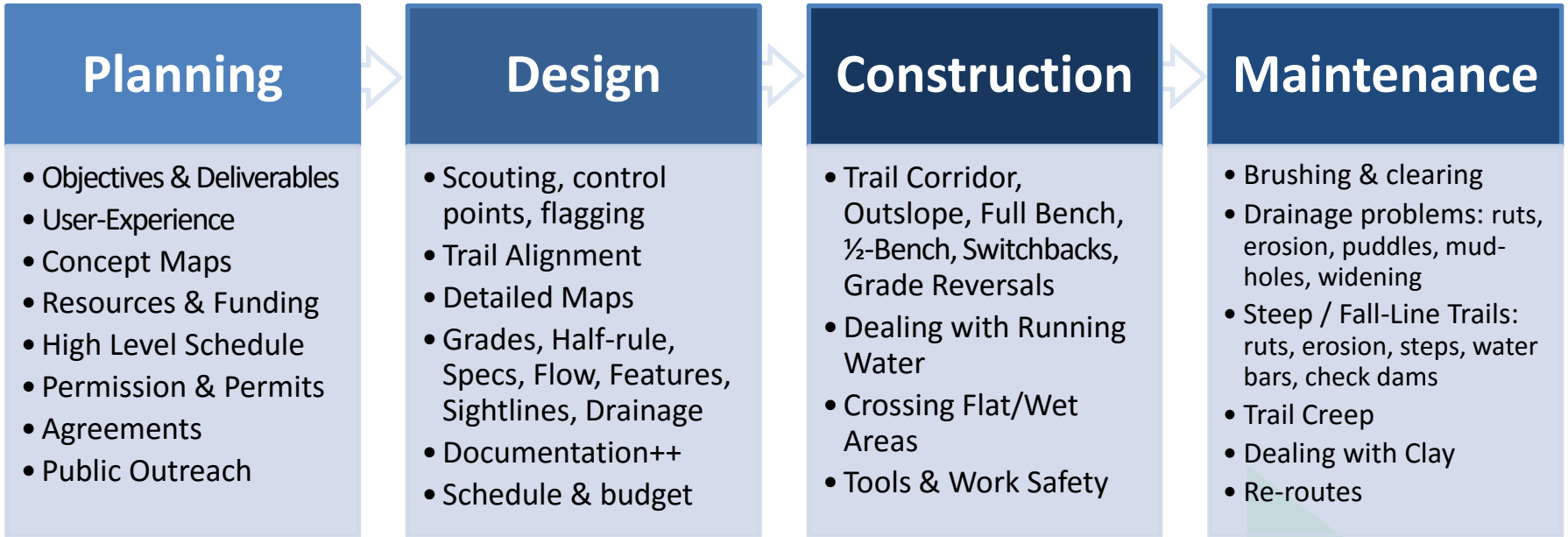


*Kids & Families  
or Hardcore ?*



*Skill Level & Progression ?*

# User Experience



***Focus on User Experience Through the Process***

*Constant pressure to change*

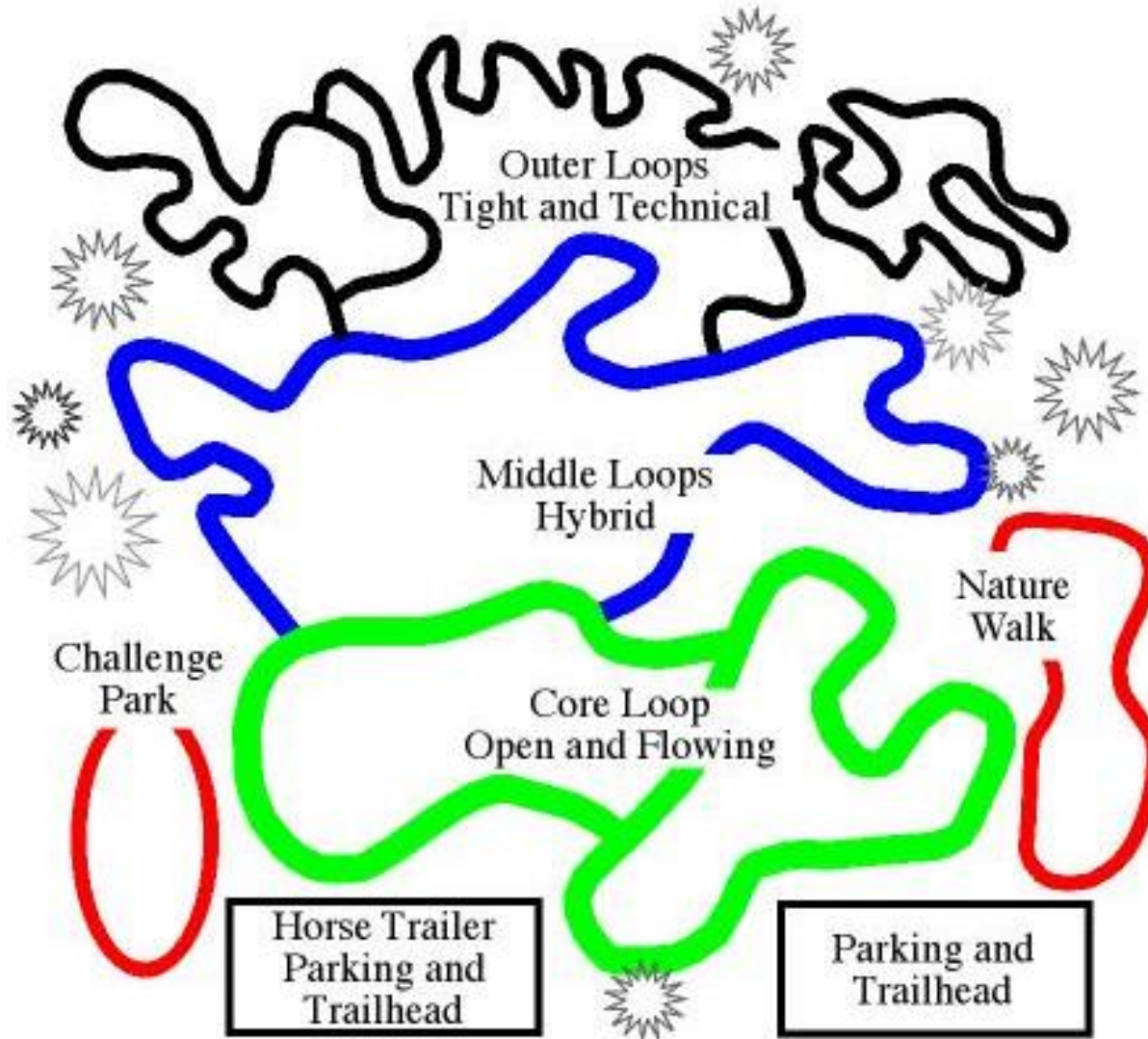
# Connections

---

- Other parks, trails, trail networks
- Towns, transportation centers
- Residential neighborhoods
- Parking, facilities
- Green spaces



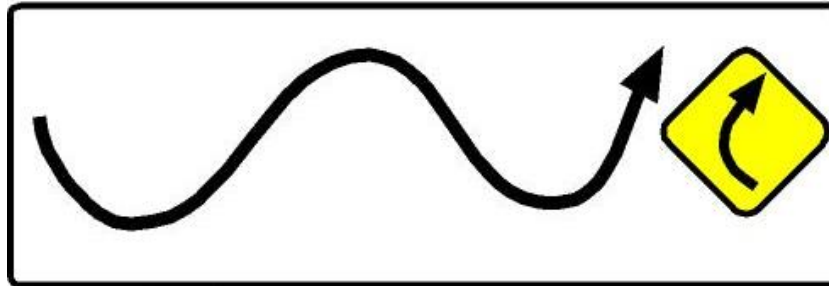
# Stacked Loop System



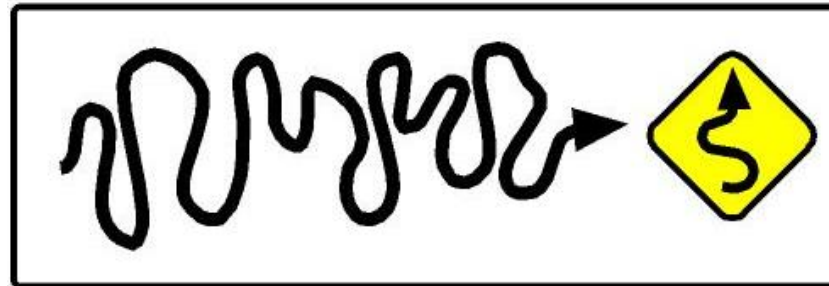
*Courtesy of IMBA*

# Trail Flow

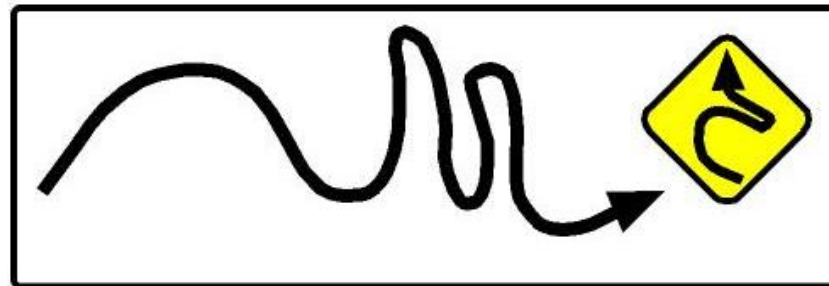
---



Open and Flowing



Tight and Technical



Poor Flow - abrupt transitions from one type of flow to another.

*Courtesy of IMBA*



# Volunteers: Building Community while Building Trails

---



## Empowering Volunteers

*An option for building better trails  
and a stronger community!*

**Community:** A group of people living together in one place, especially one practicing common **ownership**

